

Vintage Style One Loop Door Pulls

Installation Manual



The vintage version of the door pulls features single loop real leather pull held with high quality aluminum CNC machined two piece cap with mirror polished vintage Mazda logo.

Installation steps

1. Remove the OEM door pull handles.

The two caps need to be removed for two the bolts to be unscrewed and the door handle removed. The armrest door handle is secured with one more bolt at the rear.

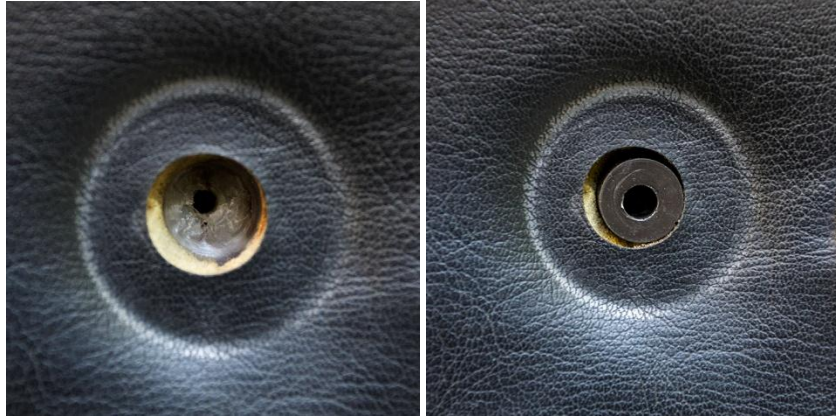
2. Open the Jass Performance Door Pull Caps.

- You can use sharp utility knife/cutter to lift slightly the upper part of the cap and then a small flat screwdriver to push it open completely.

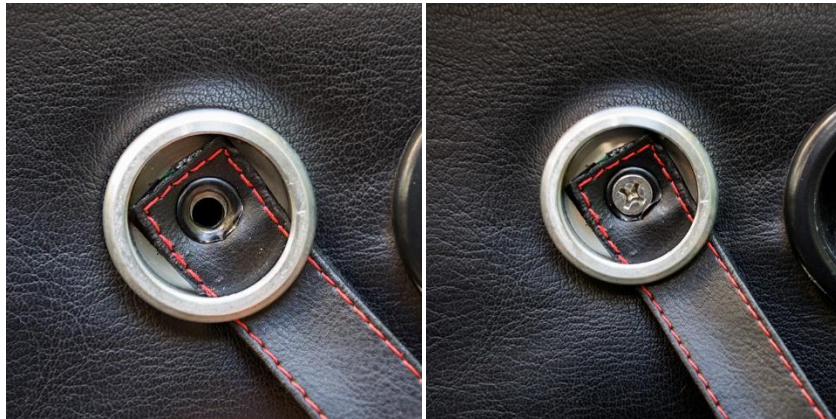


3. Mounting the cap

- Place the plastic spacer inside the hole from the OEM door pull handle first mounting point:



- Place and centre the door pull cap and mount it with the provided screw:



- Place back the upper part of the cap by pushing it down:

